

Light efficiency:

n/a Lumen/Watt

Light quality:

CRI: 92.7

Color temperature:

4116 K

Output: 372 lm/ft

Peak: 117 cd

Power: 0.00 W

PF: n/a

No photo

Product name:

ThermaLine 3 -4000K

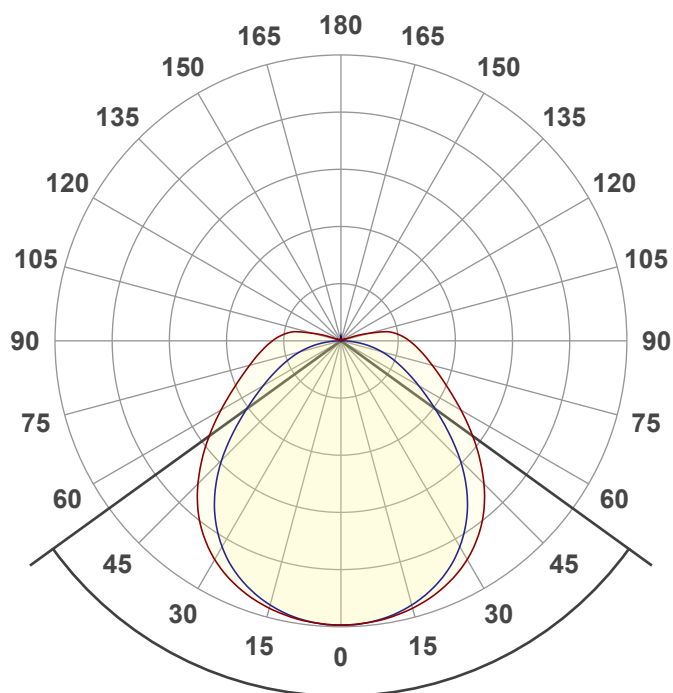
Item number:

AL-01-65-2463

Date and time:

7/15/2025 11:59:15 AM

Description:



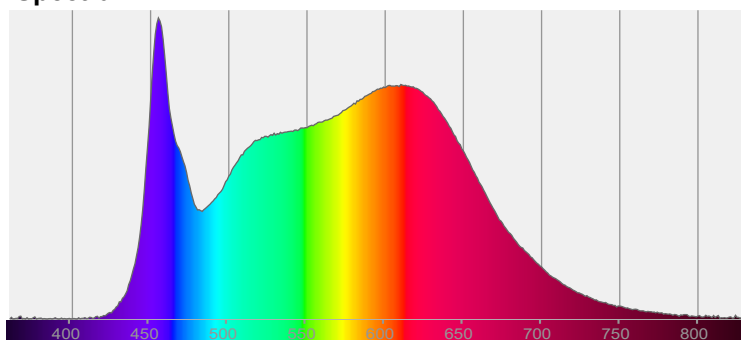
Beam angle

108.3°

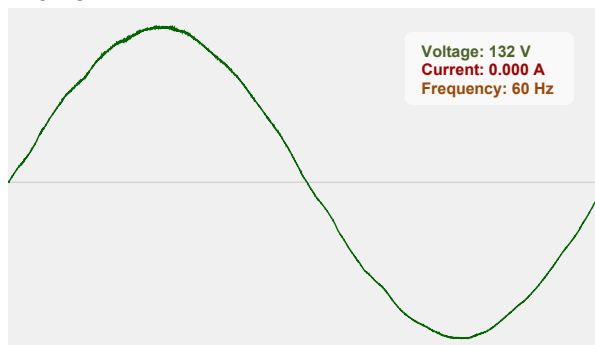


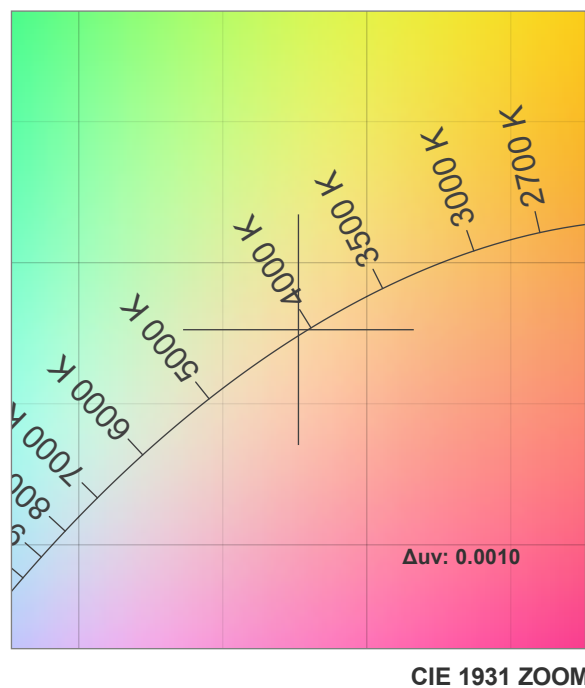
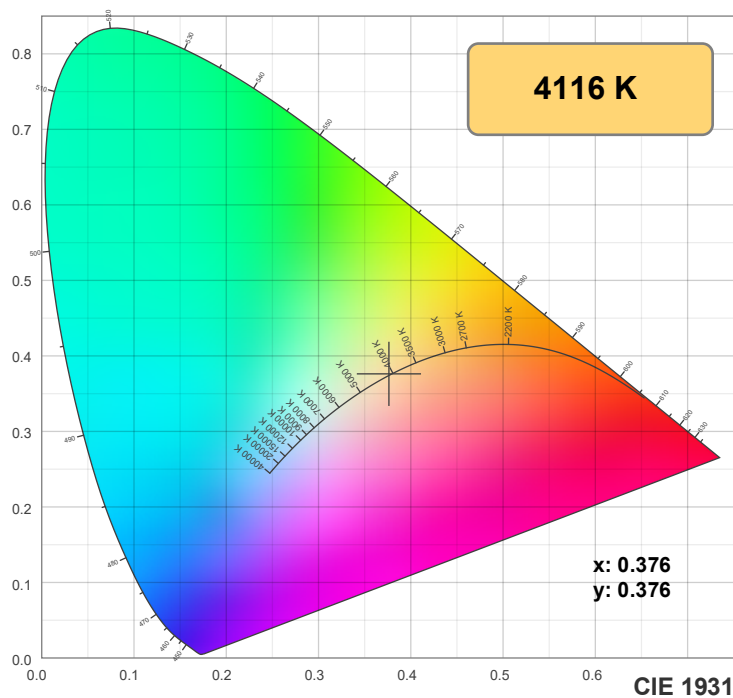
CIE 1931
x: 0.376
y: 0.376

Spectra

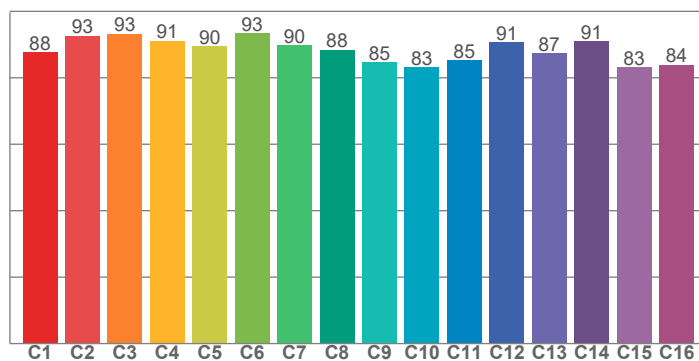


Power

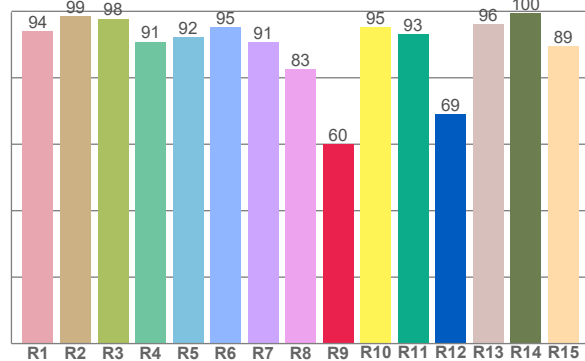




TM30: 88.3



CRI: 92.7 (R1-R8)



CRI R values, only R1-R8 are used to calculate final CRI value

R1	R2	R3	R4	R5	R6	R7	R8	R9	R10	R11	R12	R13	R14	R15
94.1	98.6	97.8	90.9	92.3	95.2	90.6	82.5	60.0	95.2	93.2	69.0	96.2	99.5	89.4

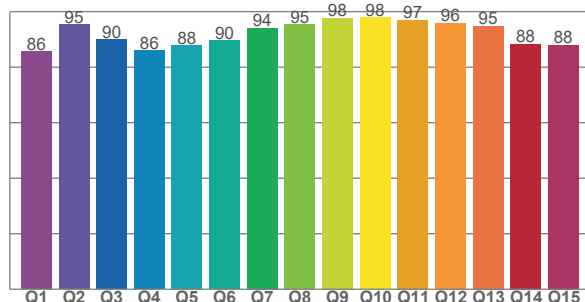
TM30 C values, 16 binned values out of total of 99 C values

C1	C2	C3	C4	C5	C6	C7	C8	C9	C10	C11	C12	C13	C14	C15	C16
87.8	92.6	93.3	91.1	89.5	93.4	89.8	88.4	84.7	83.1	85.2	90.6	87.3	91.0	83.1	83.9

CQS Q values

Q1	Q2	Q3	Q4	Q5	Q6	Q7	Q8	Q9	Q10	Q11	Q12	Q13	Q14	Q15
85.6	95.4	90.0	86.0	87.9	89.7	94.1	95.4	97.8	97.9	96.9	95.9	94.8	88.3	88.0

CQS: 91.1



Color parameters

Color temperature	Color rendering Index	Red component	Color fidelity	Color gamut	Color quality scale	Color coordinate cie 1931	Color coordinate cie 1931	Color coordinate	Color coordinate	Color deviation from black body
CCT	CRI	CRI R9	TM30 Rf	TM30 Rg	CQS	x	y	u	v	Δuv
4116 K	92.7	60.0	88.3	95.5	91.1	0.376	0.376	0.223	0.334	0.0010

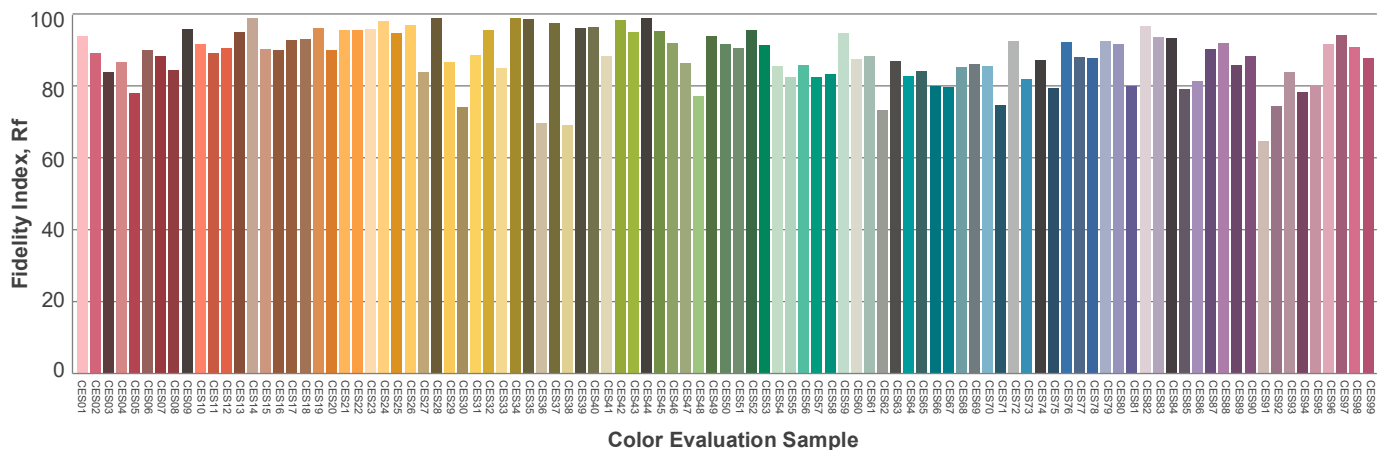
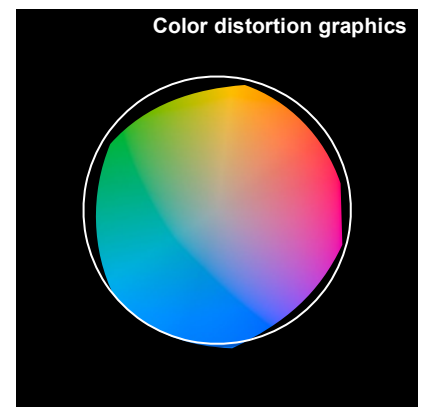
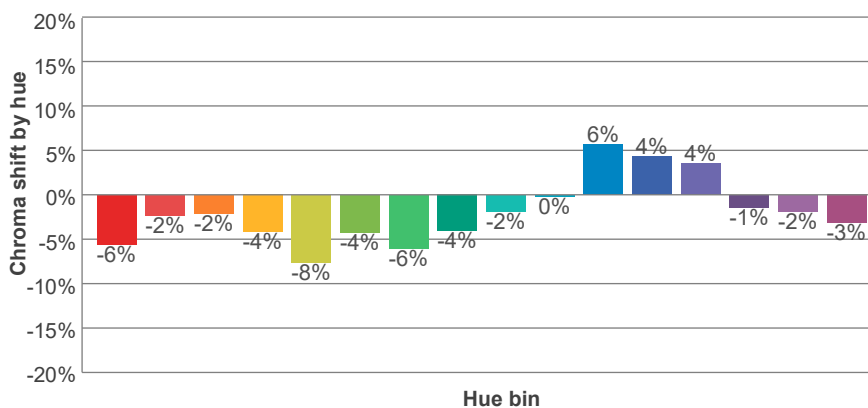
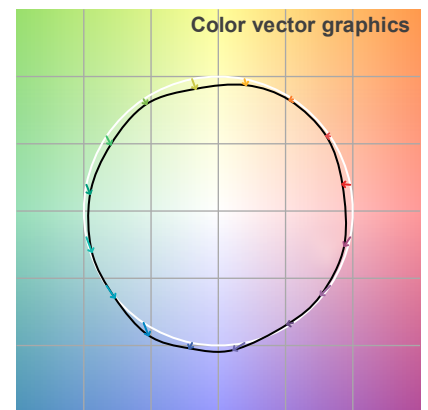
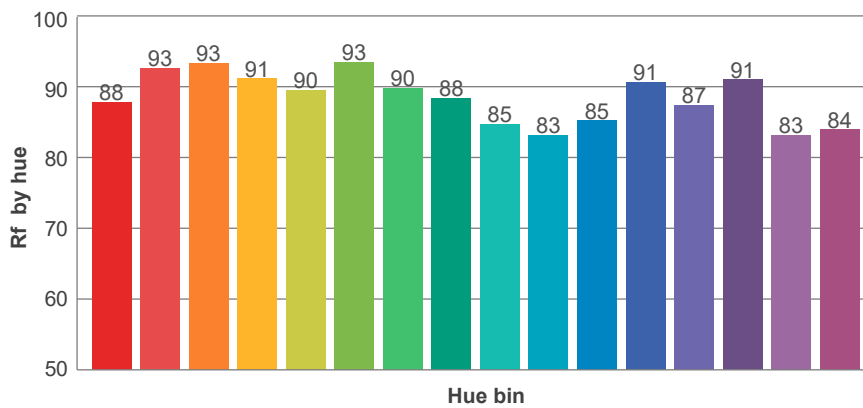
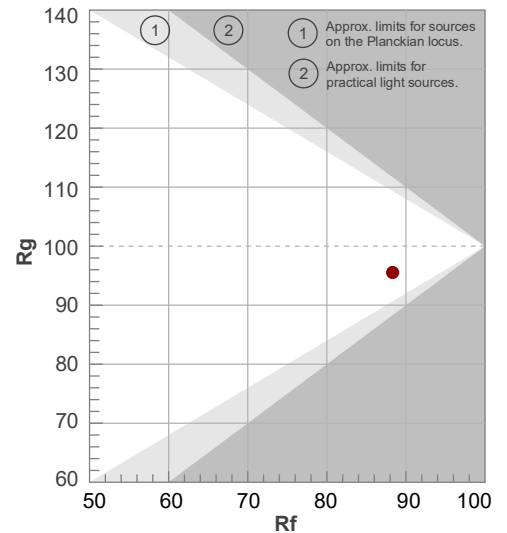
Rf 88.3

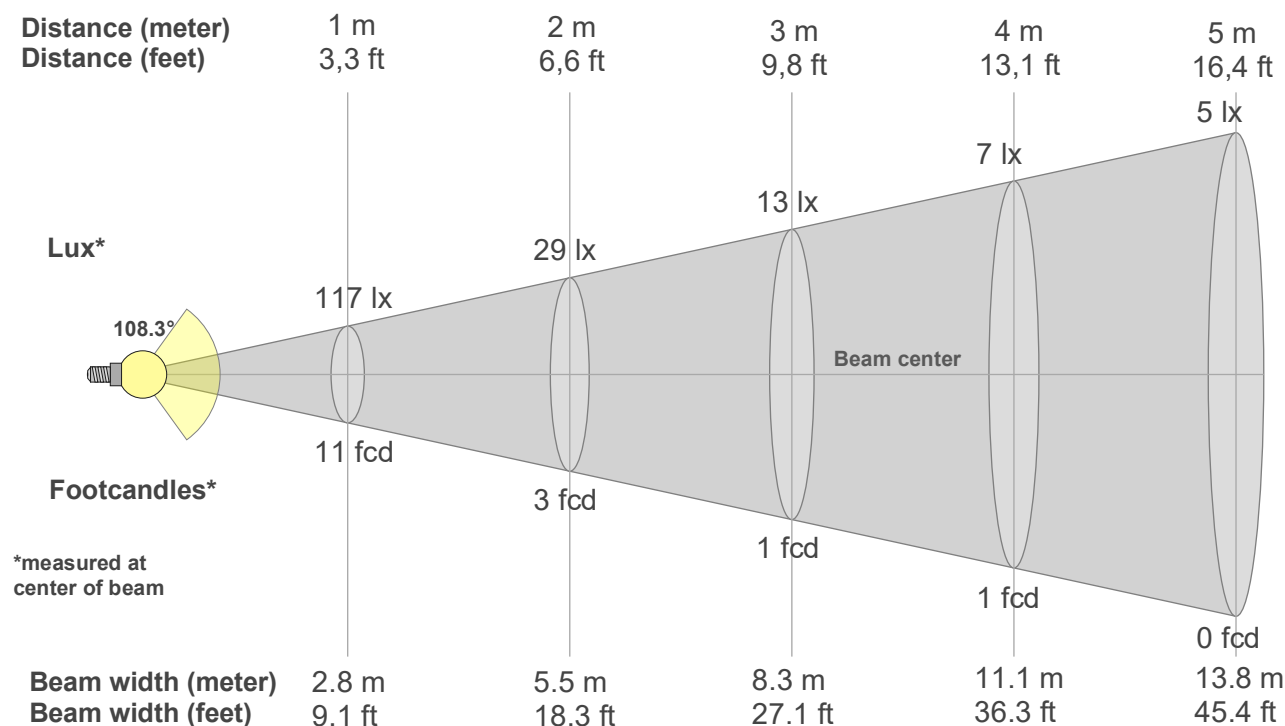
Fidelity index Rf

Rg 95.5

Gamut index Rg

Hue Bin	R _r	Shifts (%)	
		Chroma	Hue
1	88	-6%	2%
2	93	-2%	2%
3	93	-2%	2%
4	91	-4%	-2%
5	90	-8%	-1%
6	93	-4%	0%
7	90	-6%	3%
8	88	-4%	6%
9	85	-2%	11%
10	83	0%	11%
11	85	6%	8%
12	91	4%	-1%
13	87	4%	-9%
14	91	-1%	-4%
15	83	-2%	-10%
16	84	-3%	-7%





Beam intensities from 1-20m

1m	2m	3m	4m	5m	6m	7m	8m	9m	10m	11m	12m	13m	14m	15m	16m	17m	18m	19m	20m
3.3ft	6.6ft	9.8ft	13.1ft	16.4ft	19.7ft	23ft	26.2ft	29.5ft	32.8ft	36.1ft	39.4ft	42.7ft	45.9ft	49.2ft	52.5ft	55.8ft	59.1ft	62.3ft	65.6ft
117lx	29lx	13lx	7lx	5lx	3lx	2lx	2lx	1lx	1lx	1lx	1lx	1lx	1lx	1lx	0lx	0lx	0lx	0lx	0lx
10.9fcd	2.7fcd	1.2fcd	0.7fcd	0.4fcd	0.3fcd	0.2fcd	0.2fcd	0.1fcd	0.1fcd	0.1fcd	0.1fcd	0.1fcd	0.1fcd	0fcd	0fcd	0fcd	0fcd	0fcd	0fcd

Intensities in 0° c-plane

0°	9°	18°	27°	36°	45°	54°	63°	72°	81°	90°	99°	108°	117°	126°	135°	144°	153°	162°	171°
117	116	112	107	97	83	67	52	42	34	28	22	7	2	1	1	1	1	1	1
100%	99%	96%	91%	83%	71%	57%	45%	36%	29%	24%	19%	6%	1%	1%	0%	0%	0%	1%	1%

Intensities in 90° c-plane

0°	9°	18°	27°	36°	45°	54°	63°	72°	81°	90°	99°	108°	117°	126°	135°	144°	153°	162°	171°
117	115	110	102	88	69	48	32	21	11	1	1	1	1	0	0	1	1	1	1
100%	99%	94%	87%	75%	59%	41%	28%	18%	9%	1%	0%	0%	0%	0%	0%	0%	0%	0%	1%

Intensities in 180° c-plane

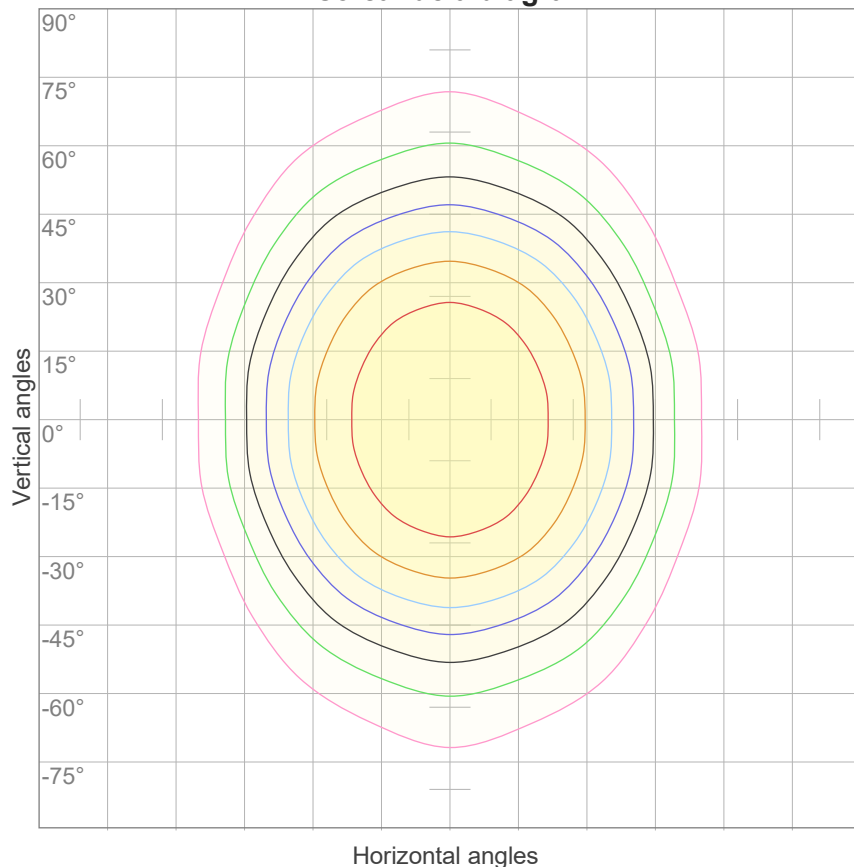
0°	9°	18°	27°	36°	45°	54°	63°	72°	81°	90°	99°	108°	117°	126°	135°	144°	153°	162°	171°
117	116	112	107	97	83	67	52	42	34	28	22	7	2	1	1	1	1	1	1
100%	99%	96%	91%	83%	71%	57%	45%	36%	29%	24%	19%	6%	1%	1%	0%	0%	0%	1%	1%

Intensities in 270° c-plane

0°	9°	18°	27°	36°	45°	54°	63°	72°	81°	90°	99°	108°	117°	126°	135°	144°	153°	162°	171°
117	115	110	102	88	69	48	32	21	11	1	1	1	1	0	0	1	1	1	1
100%	99%	94%	87%	75%	59%	41%	28%	18%	9%	1%	0%	0%	0%	0%	0%	0%	0%	0%	1%

Beam angle 50%	Field angle 10%	Cutoff angle 2,5%	Intensity ratio in 120° cone	Intensity ratio in 90° cone
108.3°	188.7°	204.4°	69.9%	48.6%

iso-candela diagram



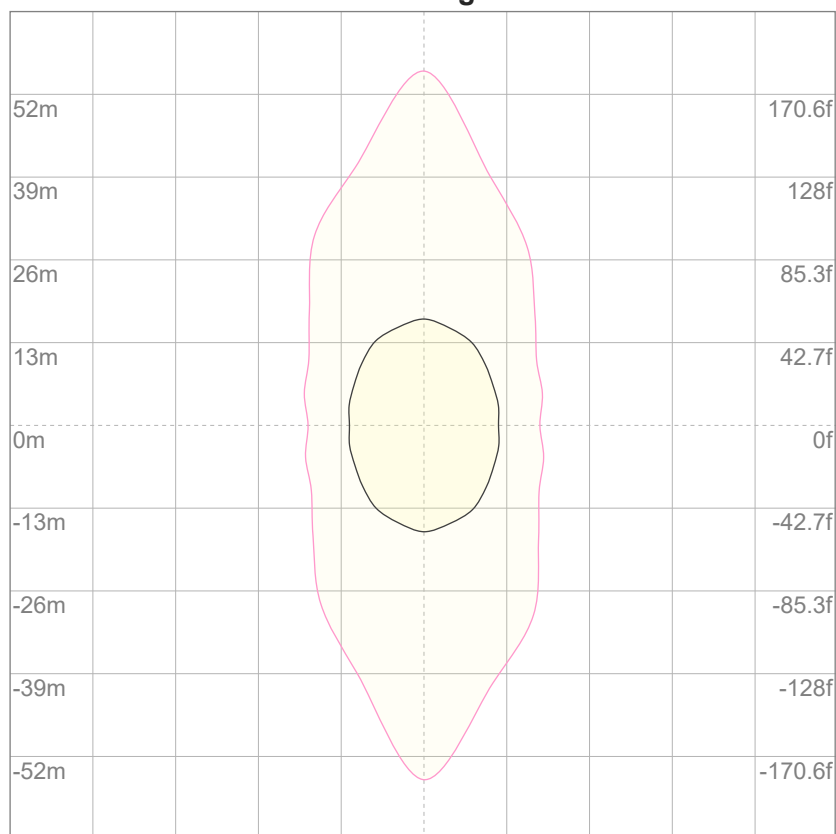
10%	12 cd
20%	23 cd
30%	35 cd
40%	47 cd
50%	58 cd
60%	70 cd
70%	82 cd
80%	93 cd
90%	105 cd

Conditions:

Number of c-planes: 12

Candela at center: 117 cd

iso-lux diagram



3%	35.1m lx
5%	58.4m lx
10%	0.117 lx
30%	0.351 lx
50%	0.584 lx

Conditions:

Number of c-planes: 12

Lux at center: 1.17 lx

*Lux distribution on a surface
when lamp is mounted at 10
meters from the surface.*

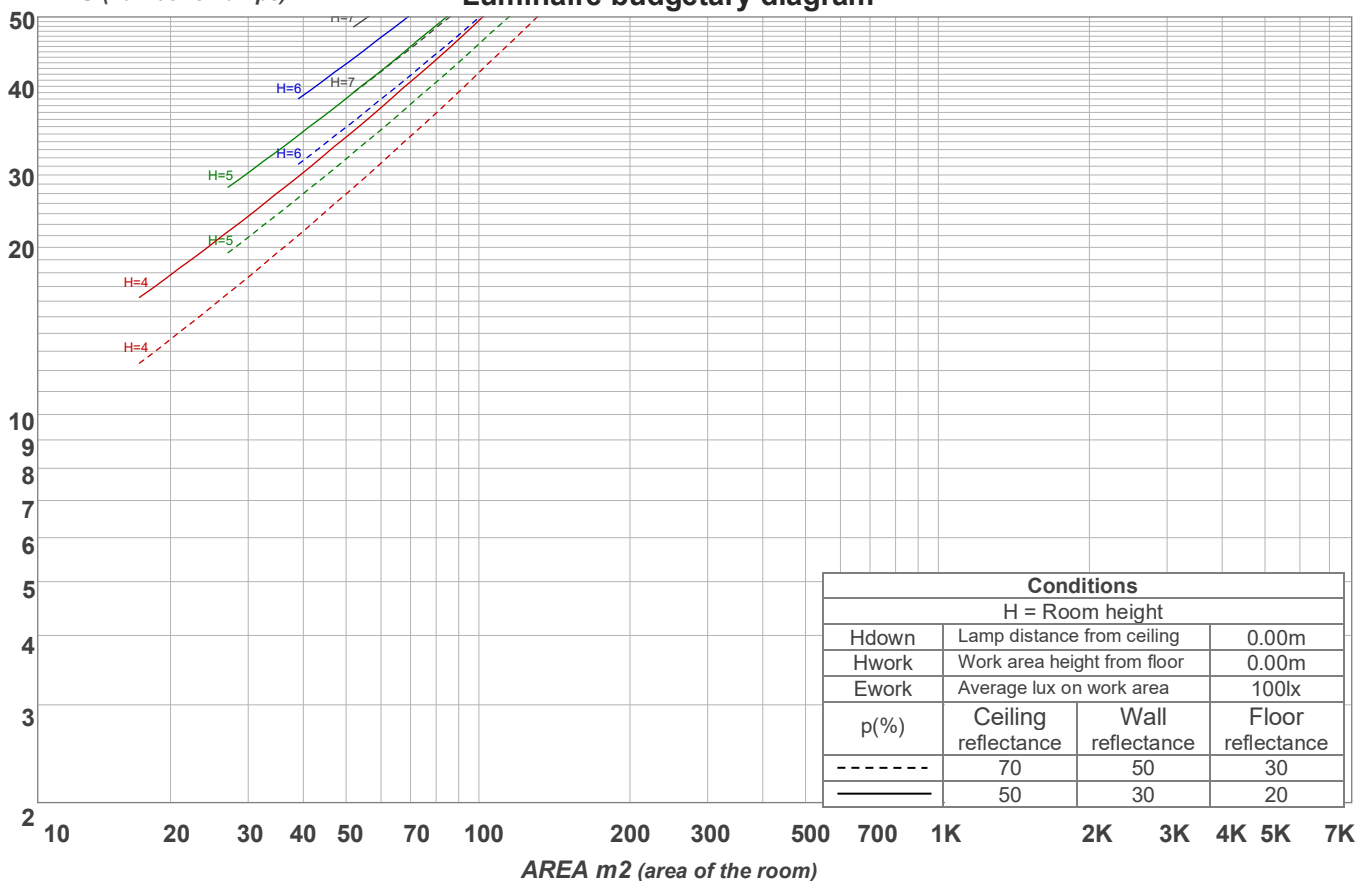
p Ceiling	70	70	50	50	30	70	70	50	50	30
p Walls	50	30	50	30	30	50	30	50	30	30
p Floor	20	20	20	20	20	20	20	20	20	20
Room size X Y	Viewing direction at right angles to lamp axis					Viewing direction parallel to lamp axis				
n/a	n/a	n/a	n/a	n/a	n/a	n/a	n/a	n/a	n/a	n/a
n/a	n/a	n/a	n/a	n/a	n/a	n/a	n/a	n/a	n/a	n/a
n/a	n/a	n/a	n/a	n/a	n/a	n/a	n/a	n/a	n/a	n/a
n/a	n/a	n/a	n/a	n/a	n/a	n/a	n/a	n/a	n/a	n/a
n/a	n/a	n/a	n/a	n/a	n/a	n/a	n/a	n/a	n/a	n/a
n/a	n/a	n/a	n/a	n/a	n/a	n/a	n/a	n/a	n/a	n/a
n/a	n/a	n/a	n/a	n/a	n/a	n/a	n/a	n/a	n/a	n/a
n/a	n/a	n/a	n/a	n/a	n/a	n/a	n/a	n/a	n/a	n/a
n/a	n/a	n/a	n/a	n/a	n/a	n/a	n/a	n/a	n/a	n/a
n/a	n/a	n/a	n/a	n/a	n/a	n/a	n/a	n/a	n/a	n/a
n/a	n/a	n/a	n/a	n/a	n/a	n/a	n/a	n/a	n/a	n/a
n/a	n/a	n/a	n/a	n/a	n/a	n/a	n/a	n/a	n/a	n/a
n/a	n/a	n/a	n/a	n/a	n/a	n/a	n/a	n/a	n/a	n/a
n/a	n/a	n/a	n/a	n/a	n/a	n/a	n/a	n/a	n/a	n/a
n/a	n/a	n/a	n/a	n/a	n/a	n/a	n/a	n/a	n/a	n/a
n/a	n/a	n/a	n/a	n/a	n/a	n/a	n/a	n/a	n/a	n/a
n/a	n/a	n/a	n/a	n/a	n/a	n/a	n/a	n/a	n/a	n/a
n/a	n/a	n/a	n/a	n/a	n/a	n/a	n/a	n/a	n/a	n/a
n/a	n/a	n/a	n/a	n/a	n/a	n/a	n/a	n/a	n/a	n/a
n/a	n/a	n/a	n/a	n/a	n/a	n/a	n/a	n/a	n/a	n/a
Variation of the observer position for the luminaire distance S										
n/a	n/a					n/a				
n/a	n/a					n/a				
n/a	n/a					n/a				
CIE 117-1995. Corrected glare indices referring to 372 lm total luminous flux										

Coefficients of Utilization

Ceiling reflectance	80				70				50			30			10			0
Wall reflectance	70	50	30	10	70	50	30	10	50	30	10	50	30	10	50	30	10	0
Floor reflectance	20	20	20	20	20	20	20	20	20	20	20	20	20	20	20	20	20	0
RCR	(RCR: Room Cavity Ratio) Room Values are expressed as percentage of Lumens delivered to the task surface																	
0	118	118	118	118	114	114	114	114	108	108	108	102	102	102	97	97	97	94
1	106	100	95	91	102	97	93	89	92	88	85	87	84	81	83	80	78	75
2	96	87	80	74	93	85	78	72	80	74	70	76	71	67	72	68	65	62
3	87	76	68	61	84	74	66	60	70	64	58	67	61	56	63	59	55	52
4	80	68	59	52	77	66	57	51	63	55	50	59	53	48	57	51	47	45
5	74	60	51	44	71	59	50	44	56	49	43	53	47	42	51	45	41	39
6	68	54	45	39	66	53	45	38	51	43	38	48	42	37	46	41	36	34
7	63	49	40	34	61	48	40	34	46	39	33	44	38	33	42	36	32	30
8	59	45	36	31	57	44	36	30	42	35	30	41	34	29	39	33	29	27
9	55	41	33	27	53	40	33	27	39	32	27	37	31	26	36	30	26	24
10	51	38	30	25	50	37	30	25	36	29	24	35	28	24	33	28	24	22

LAMPS (number of lamps)

Luminaire budgetary diagram



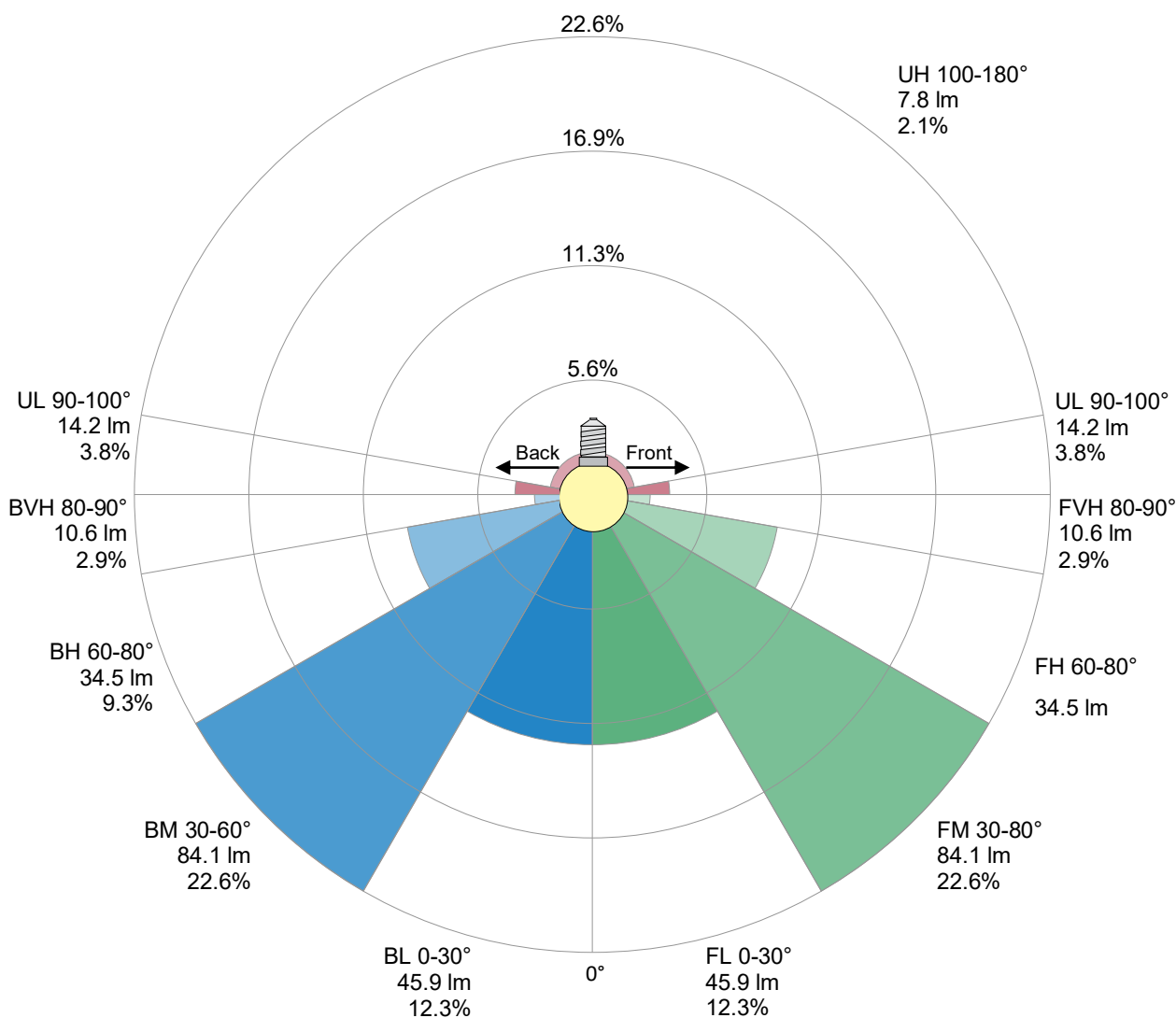
Zonal Lumen Summary

0°-10°	10°-20°	20°-30°	30°-40°	40°-50°	50°-60°	60°-70°	70°-80°	80°-90°
{LUM0-10}	31.9 lm	48.9 lm	58.9 lm	59.0 lm	50.2 lm	39.2 lm	29.7 lm	21.2 lm
90°-100°	100°-110°	110°-120°	120°-130°	130°-140°	140°-150°	150°-160°	160°-170°	170°-180°
14.2 lm	5.24 lm	0.878 lm	0.479 lm	0.378 lm	0.322 lm	0.257 lm	0.167 lm	0.058 lm

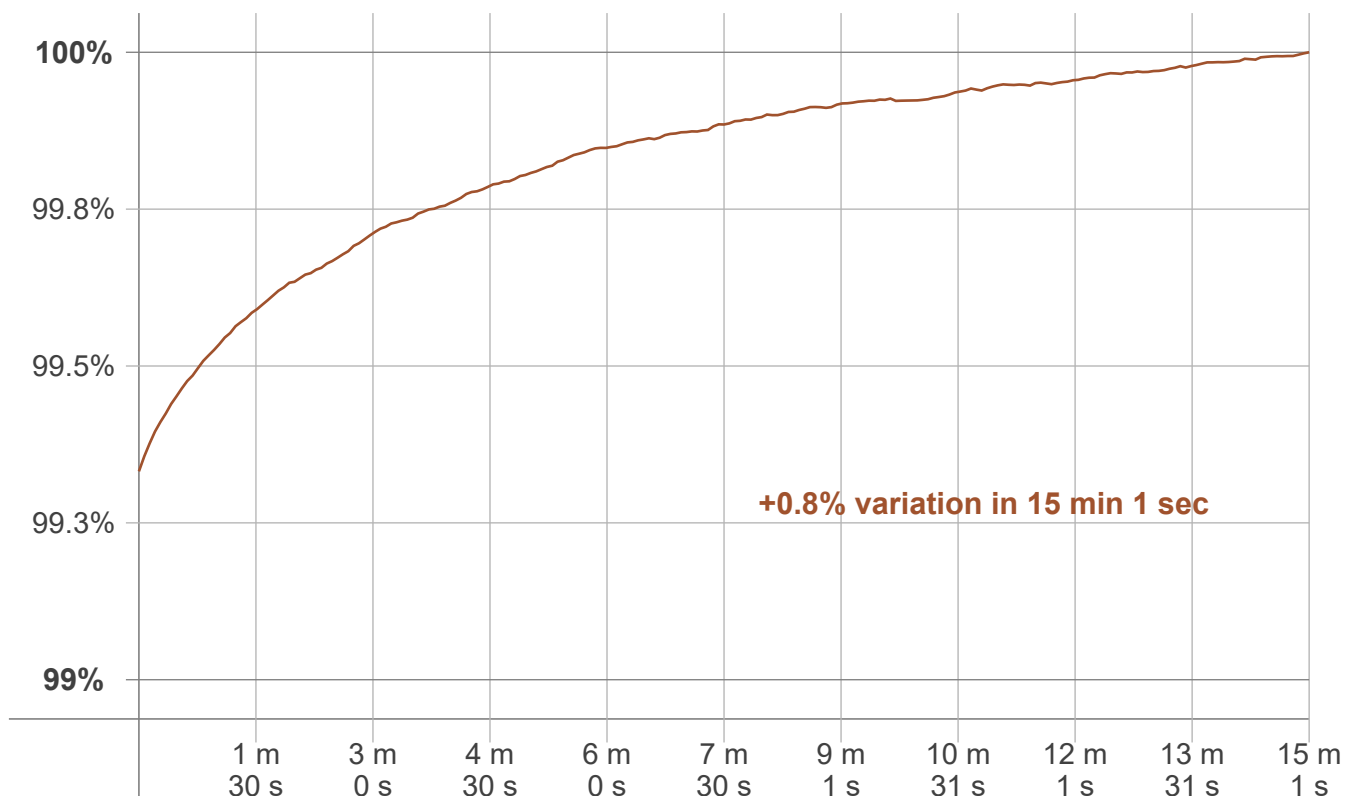
LCS table

BUG rating:	B0 U2 G1	
Forward light	Lumens	Lumens %
Low(0-30):	45.9	12.3%
Medium(30-60):	84.1	22.6%
High(60-80):	34.5	9.3%
Very high(80-90):	10.6	2.9%
Back light		
Low(0-30):	45.9	12.3%
Medium(30-60):	84.1	22.6%
High(60-80):	34.5	9.3%
Very high(80-90):	10.6	2.9%
Uplight		
Low(90-100):	14.2	3.8%
High(100-180):	7.8	2.1%

LCS graph



Warmup curve



Warmup result

Warmup time:	Lamp stabilized in 15 min 1 sec
Warmup variation	+0.8%

Warmup conditions

Stable period:	15 min
Stable change max:	2.0%
Minimum time:	15 min

Color temperature change

CCT start	CCT change	CCT end
4131 K	-15 K	4116 K

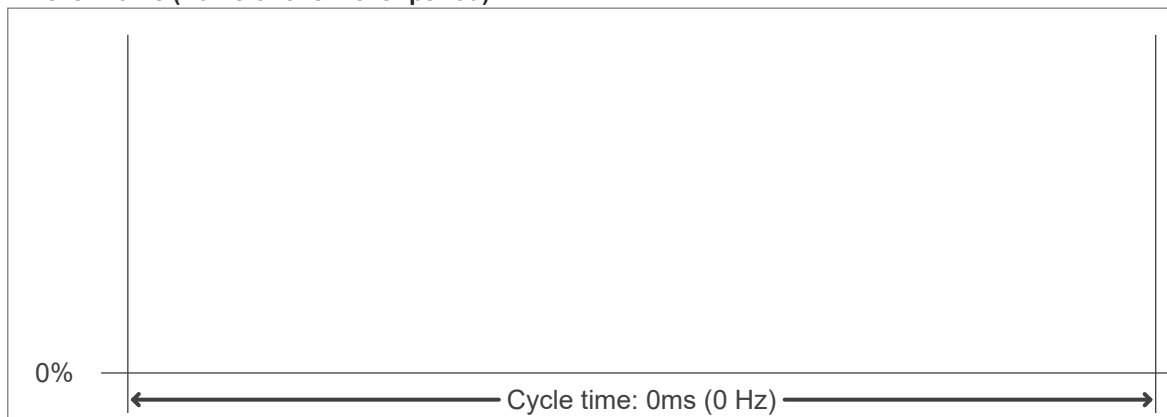
Output change

Output start	Output change	Output end
370 lm	+3 lm	372 lm

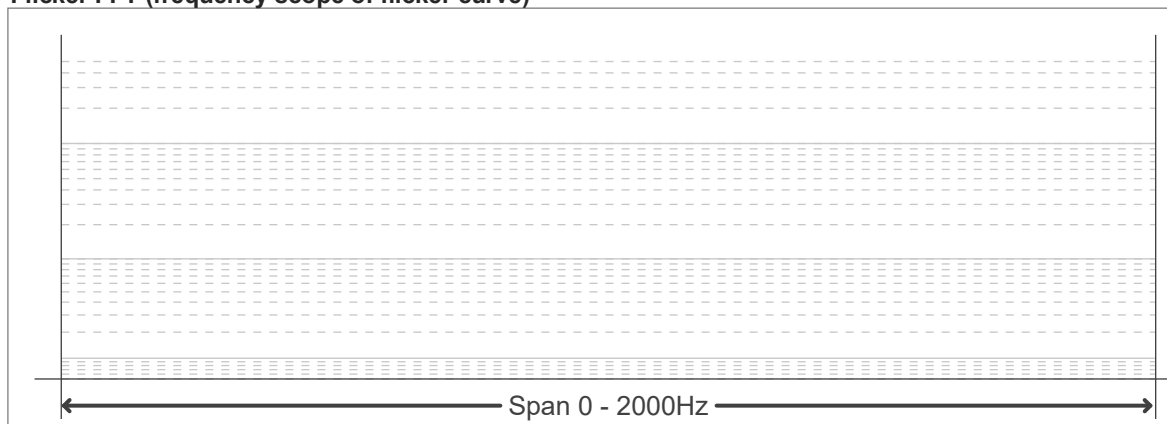
Flicker curve (complete sampled flicker signal)



Flicker frame (frame of one flicker period)



Flicker FFT (frequency scope of flicker curve)



Flicker results:

Flicker frequency:		n/a Hz	
Flicker index:	n/a	JA8/10 40Hz	n/a %
Flicker percentage:	n/a %	JA8/10 90Hz	n/a %
SVM: (Visual flicker)	n/a	JA8/10 200Hz	n/a %
PstLM	n/a	JA8/10 400Hz	n/a %
Mp	n/a	JA8/10 1000Hz	n/a %

Flicker conditions:

Sample rate:	n/a samples/second
--------------	--------------------